

New Phoenix

Petersham & Ham Sea Scouts

Sven Strassburg

Purpose of Scouting

Scouting exists to actively engage and support young people in their personal development, empowering them to make a positive contribution to society.

Petersham and Ham Sea Scouts

We are part of the Scout Association and follow the same training programme as Land Scouts with the addition of water activities.

The present 'garage type' building of pre-cast concrete blocks without windows dates back to the 1950s, when it was constructed by parents and volunteers.



Scouts use the building every night of the week and regularly on Saturday mornings.

It is also used by a kindergarten during the weekday.

Our intention is to demolish it and to construct a purpose built building which will meet the needs of our young users well into the 21st century.

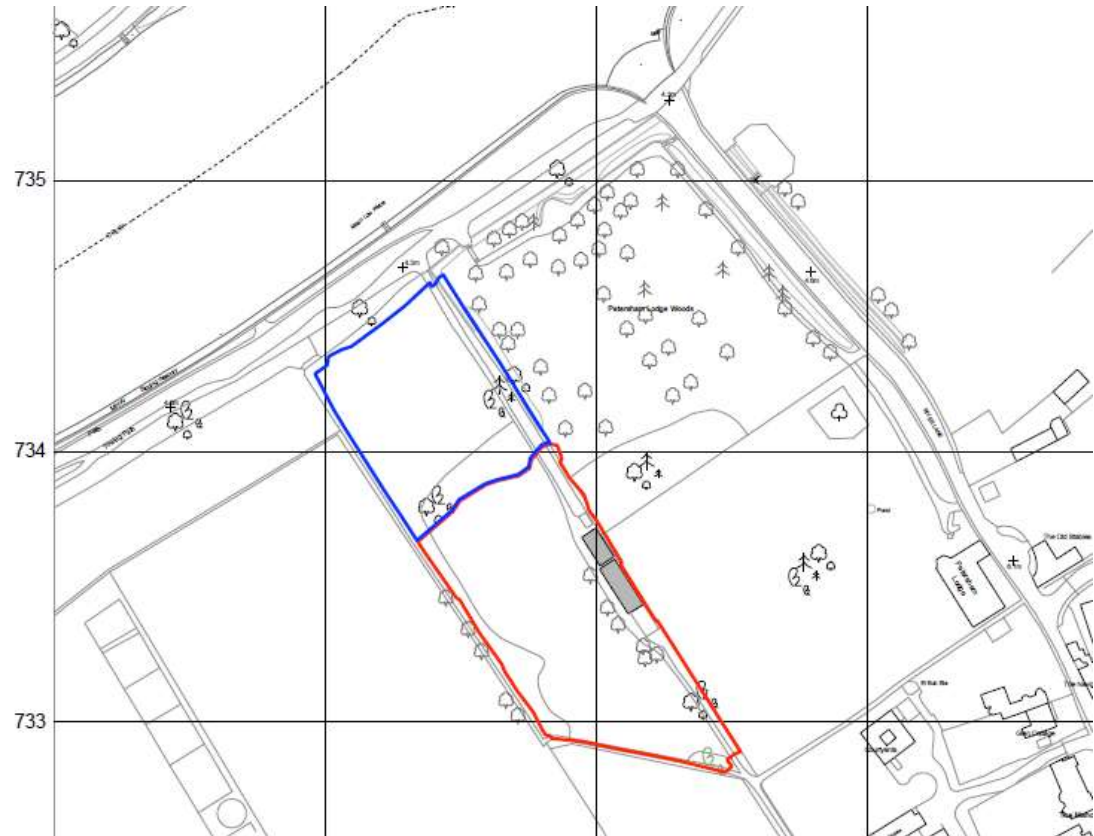
We are located next to Petersham Lodge Woods to the one side with the German School Playing fields to the other.

The River Thames Foot Path is at the bottom of the meadows.

The red and blue boxes outline the extent of the meadows.

The blue line outlines the wet woodland that the Petersham and Ham Sea Scouts hold an interest in.

No works or alterations will be made to the wet woodlands.



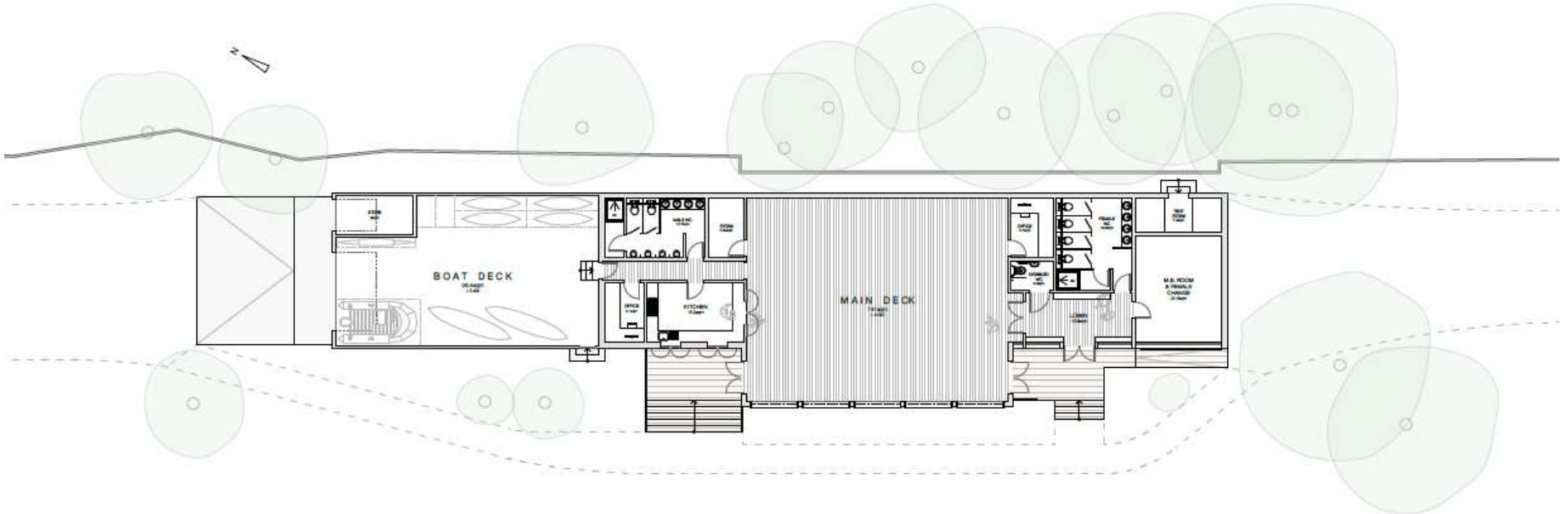
Our intention is to construct a purpose designed building to meet the needs of our young people

The proposed boat deck is designed to hold our boats and water equipment more efficiently, and will make for a safer working environment

The proposed main deck optimises the size and shape of central part of the building. This will make it easier to have team games and other group activities.

The new building will also provide separate toilet and showers facilities for boys and girls. There will also be better disabled facilities





The estimated cost of the new building is just under £600,000.00

Our architect (McDaniel Woolf) and surveyor (Sheraton-Davis Associates) are working on plans and specifications in order that we can obtain building quotes.

The value of the work our architect and surveyor have carried out so far has been substantial and, to date, has been given completely free.

Funds raised so far:

- £70,000 own fund raising

- £30,000 promised from Petersham United Charities

- £15,000 promised from Linbury Trust (Sainsbury's)

- Donation promised from Richmond Parish Lands

Our new building will be more energy efficient and utility costs will be less. Funds which are presently funnelled into savings to cover utilities and other running costs will be applied to running the group.



Scouts are a very inclusive organisation and we are based in the ward of Ham and Petersham, which is the area of highest social deprivation in Richmond. Our subscriptions, although extremely low at £8 per month, are not collected in cases of real need.

Contact details:

<http://www.pandh.org.uk/wp/>

Video:

www.youtube.com/watch?feature=player_embedded&v=KjyJT-iW1S0